

Maximum precision and total reliability

In accordance with the standards of the Corghi Master Line



Version with AUTOMATIC wheel clamping and T.I. kit (on request)



TECHNOLOGY
PARTNER
product



Dynamic bead breaking device with controlled penetration

Bead depressor

Ergonomic console

TI - Quick inflation system

SMART Corghi System

Ergonomically positioned pedals

Wheel Lifter

Main features

In 2001 we revolutionised the world of tyre changers by introducing the concept of leverless work. Since then, we have continued to develop this technology that today, despite countless attempts to copy it, still remains inimitable thanks to the "SMART Corghi System" characteristics, the only existing technology on the market that allows you to:

- **NEVER TOUCH THE RIM**, during any of the work phases;
- **cancel any tension on the tyre** during the demounting/mounting phases.

This is the difference between us and the rest.

This technology is at the heart of the new Artiglio Master 28 and it is the perfect synthesis of the experiences gained over these 18 years.

In a single tyre changer you will find all our manufacturing and design experience, for a product that operates perfectly on every type of wheel, for an unrivalled technical and economic investment over time.

Because **NOT ALL LEVA LA LEVA TYRE CHANGERS ARE THE SAME!** And we know that all too well.

ALSO AVAILABLE IN "AUTOMATIC" VERSION

SMART Corghi System the heart of the “Leva la Leva” technology

No one has been able to copy the patented **SMART Corghi System**.

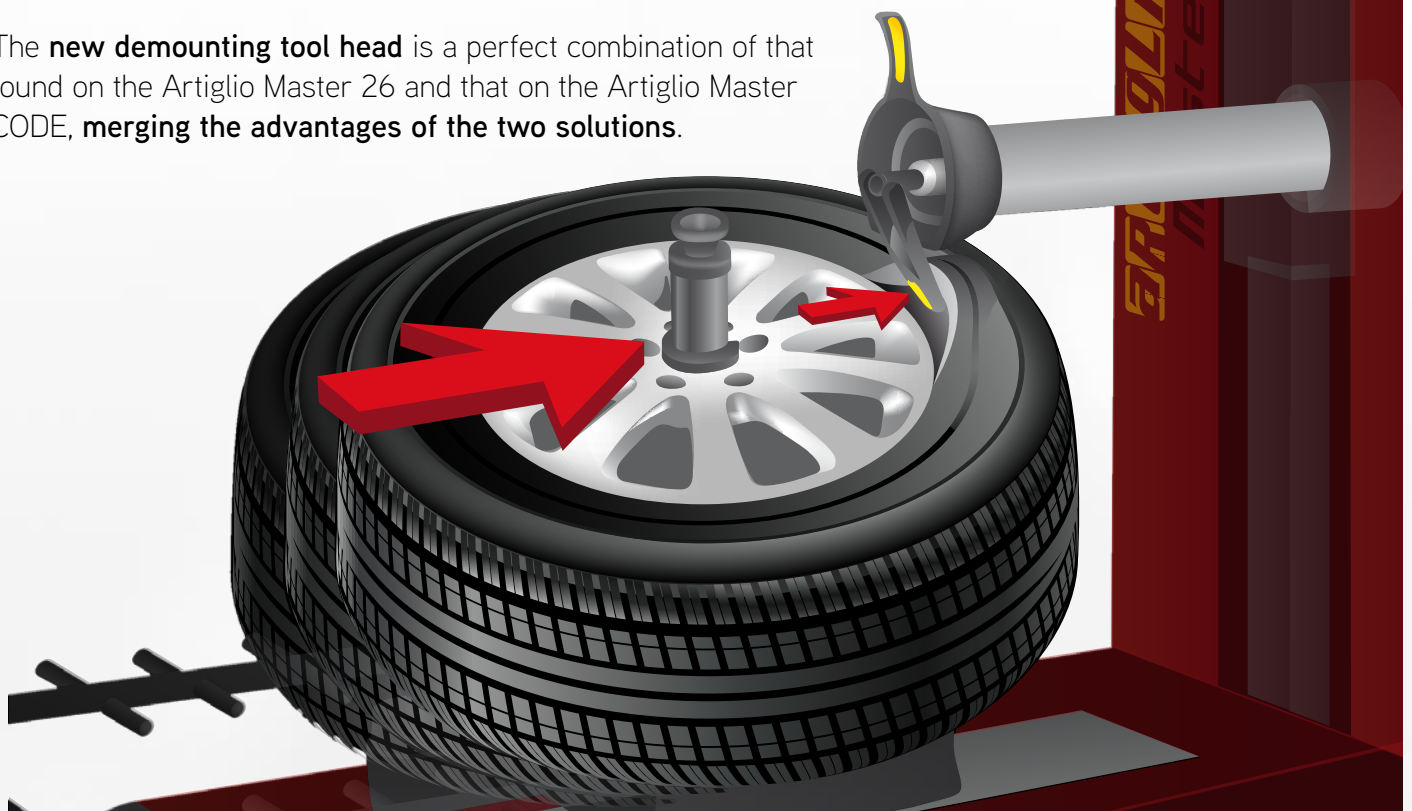
NEVER TOUCHES THE RIM, during any working phase, thanks to the fixed distance between the tool and the rim.

ANNULS ALL TENSION ON THE TYRE during the tyre demounting/mounting phases, thanks to the synchronised movement between the tool and the rim.

THIS IS THE DIFFERENCE BETWEEN CORGI AND THE OTHERS
THIS GUARANTEES A **TECHNOLOGICAL ADVANTAGE THAT HAS REMAINED UNMATCHED OVER TIME**

MAXIMUM SAFETY FOR VALVE SENSOR

The **new demounting tool head** is a perfect combination of that found on the Artiglio Master 26 and that on the Artiglio Master CODE, **merging the advantages of the two solutions**.



Watch the video





Console

Ergonomic and **multifunctional** consoles with a display that makes it possible to electronically set the rim diameter and obtain the horizontal positioning of the work tools in a quick, practical and safe manner. **Divided into three distinct work areas**, it makes it easier to immediately recognize movements and makes the system easier to use for the operator.



Dynamic bead breaking device with controlled penetration

- **Dynamic bead breaking device** with dual specular bead breaker disc. The radial positioning of the discs is made easier by an automatism that is able to prevent any manual positioning by the operator.
- **Controlled penetration** (Patent Pending) Precision, rapidity and repeatability are guaranteed by the patented bead breaking system and by the perfectly synchronized and symmetrical motions of the two discs.
- **Enhanced bead breaker force** to operate effectively on all types of tyres.



Rapid bottom bead demounting procedure



Rapid demounting procedure with bead breaker disc (particularly useful with stiff sidewalls).

“AUTOMATIC” VERSION WITH ELECTRO-MECHANICAL WHEEL LOCKING

The “**AUTOMATIC**” version offers the same electro-mechanical locking system currently used on top-of-the-range models: Master CODE Plus and Master Force.

The **ELECTRO-MECHANICAL** locking system represents an important feature for everyday tire service operations. It is a wheel locking system recognized as the most high-performing and professional available on the market.

Its use is **simple** and intuitive. **Safe** and **reliable**.

Key benefits of the new wheel locking system

- Increased performance of the most iconic Master models of the Corghi brand.
- More precise, reliable, and uniform wheel locking, in line with the high standards that distinguish the Master series.
- Locking with dedicated torque control ensures perfect wheel clamping and guarantees that all wheels are tightened in the best possible way.



VERSION WITH MANUAL WHEEL CLAMPING

Safe and universal wheel clamping.

The axial mounting turntable ensures rapid clamping while permitting bead breaking on both sides without having to turn the wheel itself. The constant working height (reverse rims excluded) has been optimised for **ideal operator ergonomics** with all wheel types, reducing physical effort.



Bead depressor

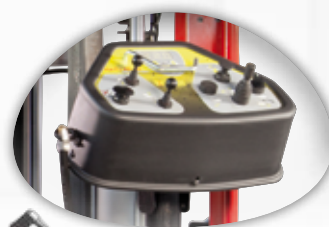
- Bead depressor with adjustable working height
- Depressor shape ideal for RFT tyres
- Standard in all versions
- The return to work position is facilitated by a spring system



Ergonomics

Fixed work position:
pedals, consoles and wheel loading on the same side.

Constant working height
for perfectly ergonomic movements.



Wheel Lifter

A wheel lifter for effortlessly placing wheels of any type onto the turntable (optional accessory).



Standard Accessories

Manual wheel clamping version



"Automatic" version



Recommended Accessories

8-15100003

Special adapter kit for high rims (H=28mm).
 E.g. Porsche rear wheel



8-15100040

Spacer ring kit H=22mm
 matches with 8-11100037 / 8-11100086 / 8-15100003



8-15100037

Van and pick-up rim rise kit



8-11400340

TI - Quick inflating system kit

8-11400341

TI - Quick inflating system kit ASME (for USA and Canada)



8-15100041

Universal flange ALL IN ONE
 h 100 mm + 20 mm spacers
 (min-max wheelbase - PCD :
 95-183 mm / 3.7"-7.2")



TECHNICAL SPECIFICATIONS

WHEEL DIMENSION RANGE

RIM DIAMETER	13" ÷ 28"
MAXIMUM TYRE DIAMETER	1100 mm (*)
MAXIMUM TYRE WIDTH	406 mm (16")*
TYRE TYPES PROCESSED	CONVENTIONAL, LOW PROFILE AND RUN FLAT

TURNTABLE

CLAMPING	MANUAL - ELECTROMECHANICAL ON "AUTOMATIC" VERSION
DRIVE SYSTEM	2 SPEED MOTOINVERTER
ROTATION TORQUE	1100 NM
ROTATION SPEED	7 - 18 rpm

BEAD BREAKER

MAXIMUM BEAD BREAKING RANGE	18"
BEAD BREAKER STROKE	450 mm
BEAD BREAKER FORCE	8000 N

WHEEL LOADING / UNLOADING

OPERATION	PNEUMATIC
MAX WHEEL WEIGHT	85 KG

POWER SUPPLY

ELECTRIC 1PH	230V - 0,75 KW - 50 HZ
ELECTRIC 1PH (ALTERNATIVE)	110V - 0,75 KW - 60 HZ
PNEUMATIC OPERATING PRESSURE	8 ÷ 9,5 BAR (MIN.)
WEIGHT	440 KG (TI = 455 KG)
PACKAGING (L X D X H)	1950x1150x2100 mm
PACKAGING WEIGHT	470 KG (TI = 480 KG)

DIMENSIONS

