

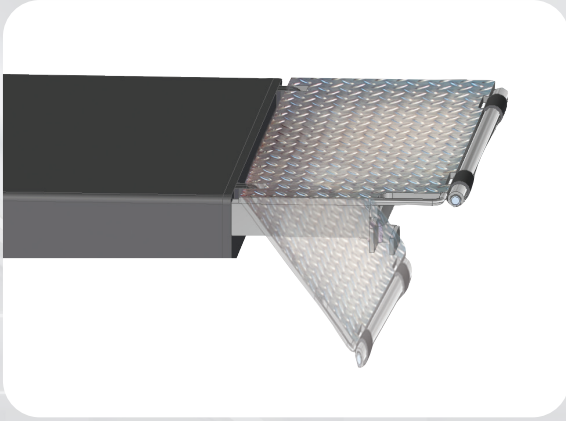
# Runway underbody scissor lifts

Fully compliant to what specified in *EN1493:2022* norm.



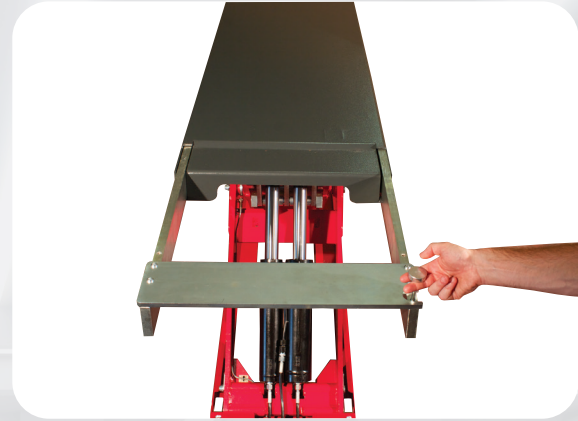
3000  
3500





### Runway with suspended flaps

Runways with suspended flaps (only for ERCO 500F - 505F) which also act as vehicle access ramps.



### Runway with slide-out extension

Runway with slide-out extension (only for ERCO 500 - 505) for precise length adjustment.

### Hydraulic runway levelling system

Hydraulic runway levelling system with dual master/slave circuit (two cylinders per runway) for total safety without the need for mechanical racks. Runway realignment performed automatically at each cycle.



### Superior stability

ERCO500 - ERCO 505 lifts feature large section structural elements for superior stability when lifting vehicles.

### Sliders

Runway and base with generously sized self-lubricating sliders.



## TECHNICAL SPECIFICATIONS

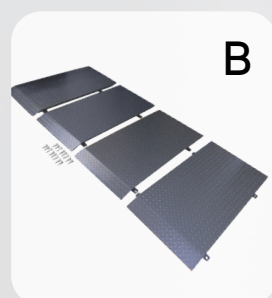
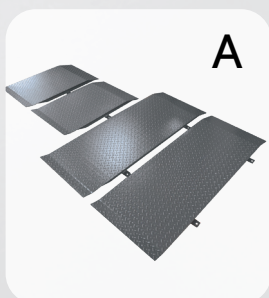
ERCO	500				505			
	FI	I	F		I		F	FI
LOAD CAPACITY	3000 KG				3500 KG			
ELECTRIC MOTOR POWER	3 KW							
POWER SUPPLY	230-400V 3PH 50-60HZ 230V 1PH 50HZ							

## AVAILABLE VERSIONS

ERCO	500				505			
	FI	I	F		I		F	FI
RUNWAYS WITH FLAPS	●		●				●	●
RUNWAYS WITH EXTENSIONS		●		●	●	●		

## RECOMMENDED ACCESSORIES

ERCO	500				505			
	FI	I	F		I		F	FI
A. SET OF LONG RAMPS FOR THE FLOOR VERSION L1 = 800 MM - L2 = 1300 MM				●		●		
B. SET OF LONG RAMPS FOR THE FLOOR VERSION L = 1000 MM			●				●	
C. EXTENSIONS FOR PIPES AND CABLES, LIFT-CONTROL UNIT 1M	●	●	●	●	●	●	●	●
D. EXTENSIONS FOR PIPES AND CABLES, LIFT-CONTROL UNIT 2M	●	●	●	●	●	●	●	●
E. PAIR OF BEAMS FOR ALL-TERRAIN VEHICLES	●	●	●	●	●	●	●	●
F. KIT OF 4 RUBBER BLOCKS HEIGHT 80 MM	●	●	●	●	●	●	●	●



F

E

For further information, consult the complete accessories

## DIMENSIONS

